



HP PREPASTED WALLPAPER INSTALLATION



Check out www.hpwallart.com for more information and design inspiration.

Follow these step-by-step instructions to apply your panels to the Wall, and then show off your work of art- and your handiwork.

INSTALLING CUSTOM PRE-PASTED WALLPAPER

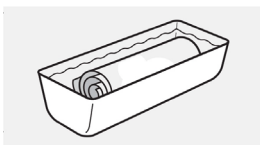


Figure 2

STEP 1 – PREPARE THE WALL

Check that the wall surface is clean, smooth, dry and free to debris.

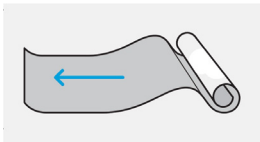


Figure 3

STEP 2 – PREPARE THE PANELS

Loosely roll the panel with the printed side facing in.

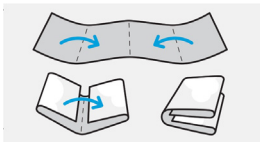


Figure 4

Completely submerge the rolled panel in a tray of water long enough to fully wet the panel (10-15 seconds)

Remove and lay the panel on the floor glue side up.

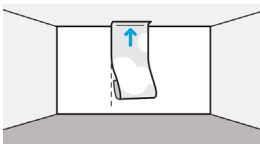


Figure 5

Fold both ends of the panel into the centre without creasing so that graphics are now on both sides (known as booking). Leaved Booked for 1 minute.

Unfold the top half of the panel, leaving the bottom half of the panel folded in (booked).



Figure 6

STEP 3 – INSTALL FIRST PANEL

Draw a vertical line on the wall where you will start placing your first panel. Start placing the first panel at the top using the vertical line as a reference.

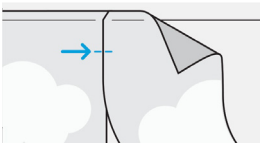


Figure 7

Align the horizontal reference guides printed at 51mm from the top of the panel with the intersection of the wall and the ceiling.

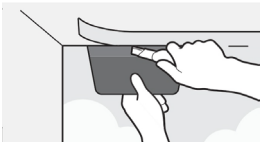


Figure 8

Smooth down the paper with the wallcovering hanging brush, working from the top centre to the bottom edges ensuring that there is no air bubbles and that the edge stays on the pencil mark.

STEP 4 – INSTALL THE REST OF THE PANELS

Once the first panel is hanged start hanging the following panels. Make sure you match up the print of the two panels whether using the overlap or edge to edge method.

STEP 5 – INSTALLING WALLPAPER AROUND LIGHT SWITCHED AND SOCKETS

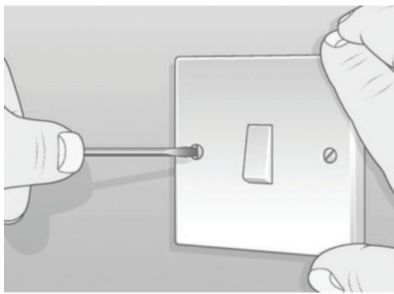
Uninstall the fitting cover. (You may need to turn the power off!)

Hang the panel over the fitting and smooth it very gently.

Make a hole in the wallcovering where the centre of the fitting is placed.

Remove the wallcovering surplus from the fitting with scissors being careful not to exceed the fitting cover size.

Remount the fitting cover.



STEP 6 – TRIMMING AND FINISHING

Using a straight edge, push the panel flush against the wall and into the joint between the wall and the ceiling, objects, baseboard etc

Use the straightedge as a guide and cut away the overlapping material with a craft knife.

